

**GRASS BAGGER
BG36, BG39, BG43
Parts Catalog 8-3190**

4-91-RP-500-071

ALPHABETICAL INDEX

MODEL BG36 GRASS BAGGER

	Page	Grid
Entire Parts List	5	A4

MODEL BG39 GRASS BAGGER

Entire Parts List	7	A6
-------------------------	---	----

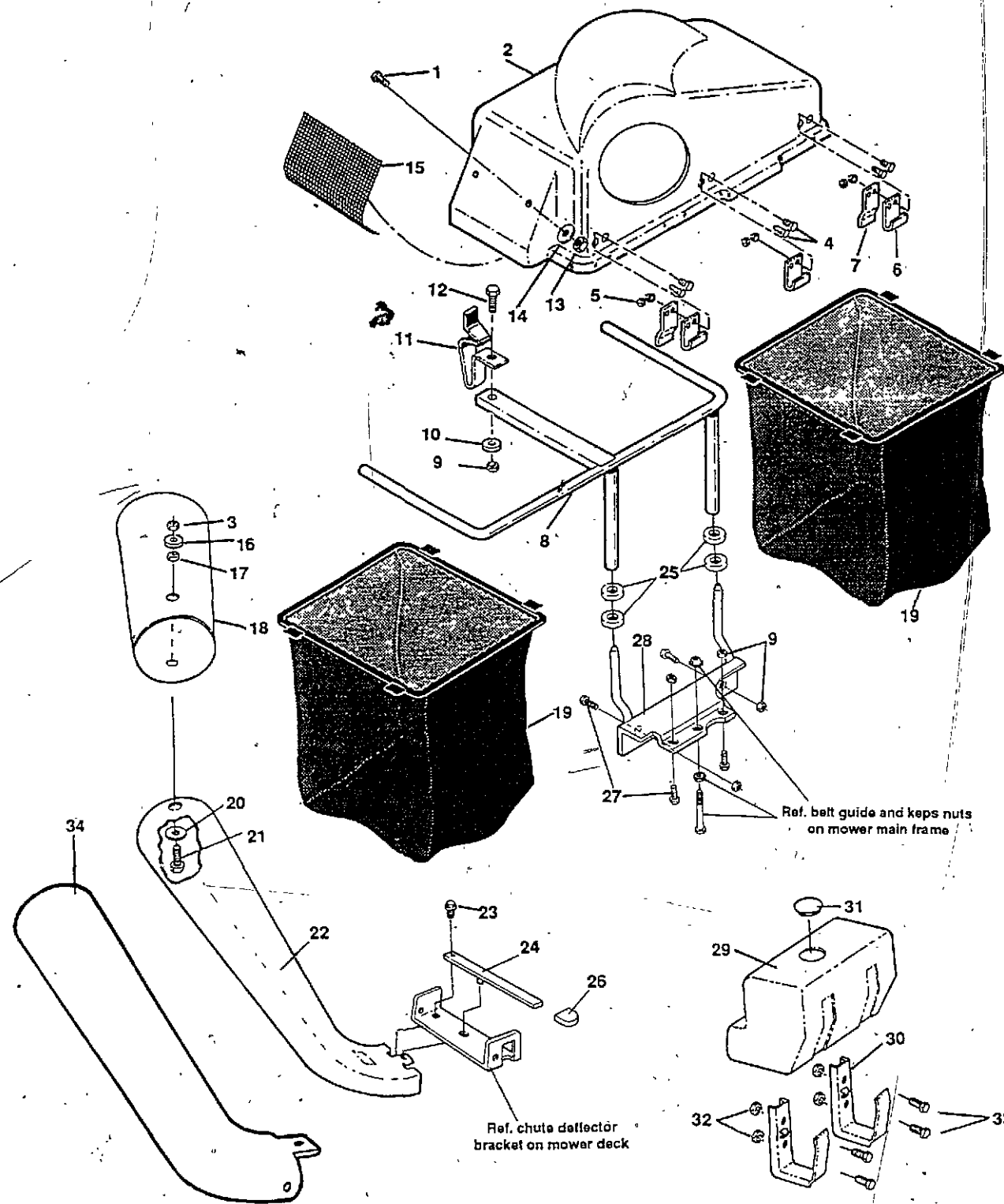
MODEL BG43 GRASS BAGGER

Entire Parts List	9	A8
-------------------------	---	----

AIR-ASSIST BLOWER

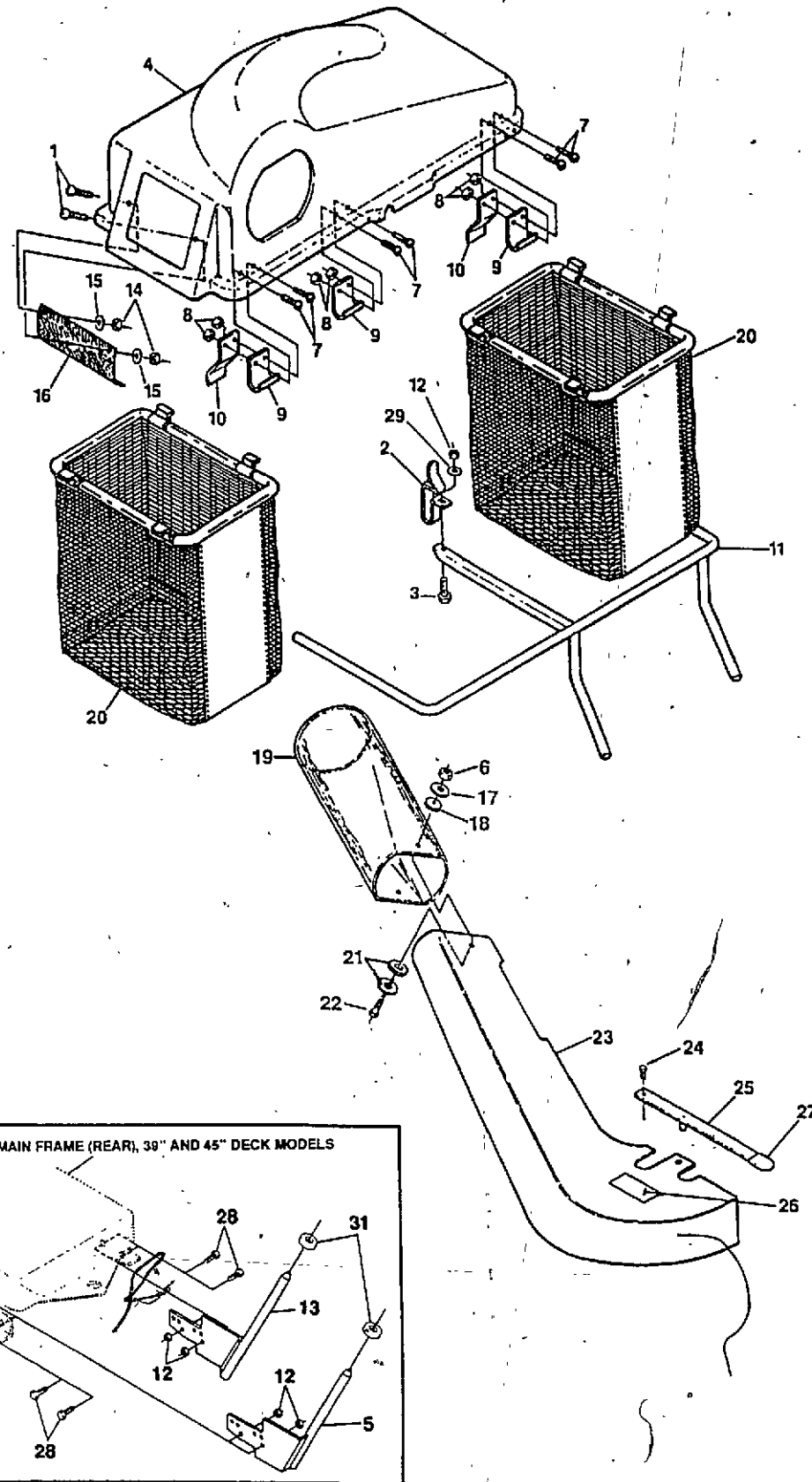
Entire Parts List	11	A10
-------------------------	----	-----

GRASS BAGGER MODEL BG36



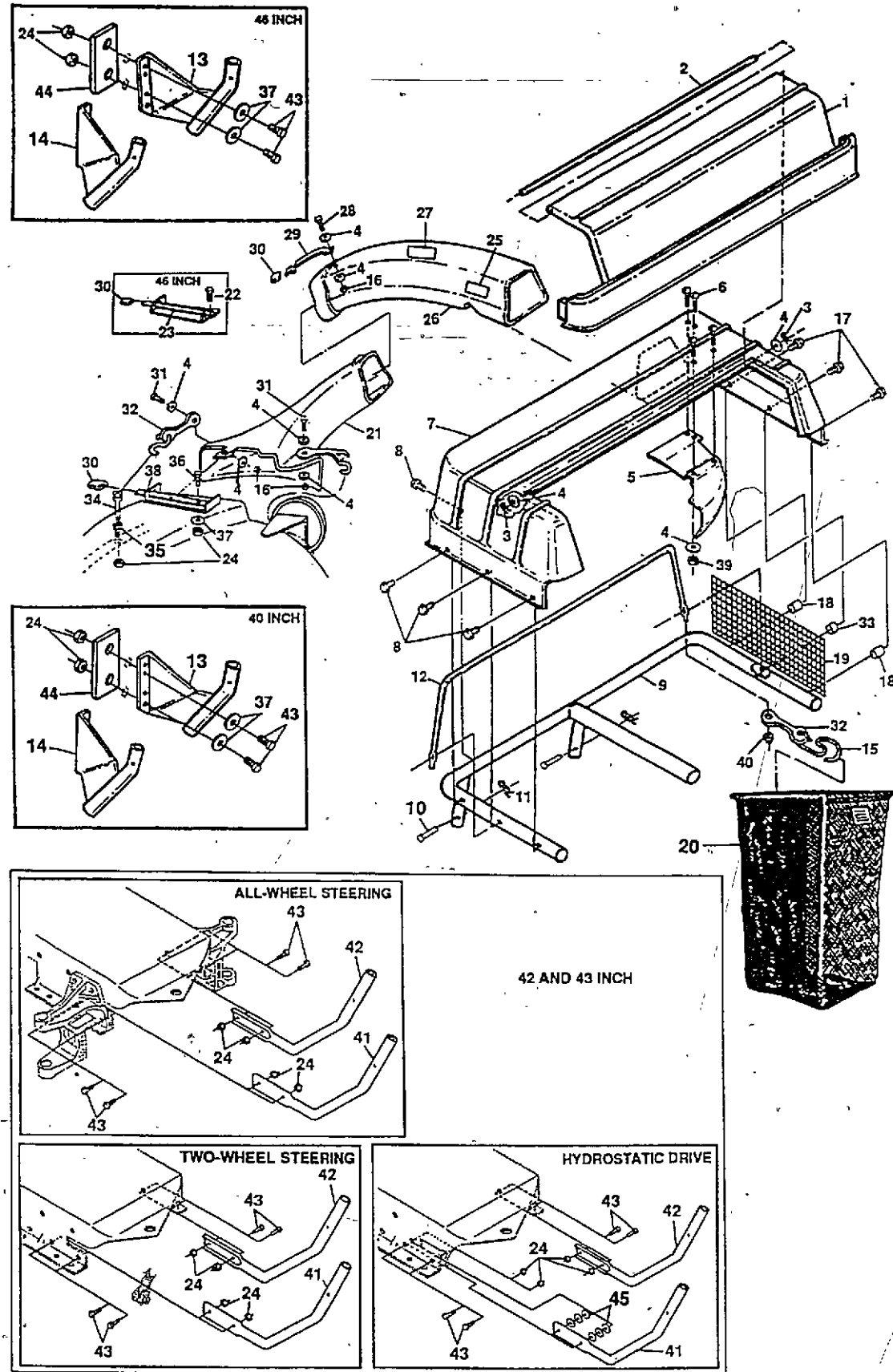
KEY	PART NO.	DESCRIPTION
1	C35569	SCREW - FL. HD. 1/4"-20 X 5/8"
2	C35570	COVER
3	C34806	NUT - LOCK 1/4"-20
4	C35571	SCREW - RD. HD. 1/4"-20 X 5/8"
5	C35024	NUT - KEPS 1/4"-20
6	C35572	HINGE - COVER
7	C35573	STRAP - RETAINER
8	C35574	SUPPORT ASSEMBLY
9	C34798	NUT - LOCK 5/16"-18
10	C34876	WASHER - FLAT 11/32"
11	C35575	LATCH - BAGGER
12	C35004	SCREW - HEX. HD. 5/16"-18 X 1/2"
13	C35290	NUT - KEPS, NO. 10-24
14	C35576	WASHER - FLAT 13/64"
15	C35577	SCREEN
16	C35578	WASHER - FLAT 9/32"
17	C35579	GROMMET - RUBBER
18	C35580	TUBE ASSEMBLY - UPPER
19	C35581	BAG
20	C35582	WASHER - FLAT 5/16"
21	C35132	SCREW - HEX. HD. 1/4"-20 X 3/4"
22	C35583	CHUTE - TRANSITION
23	C34848	SCREW - TAPPING 5/16"-18 X 1/2"
24	C35584	LEVER - LATCH
26	C35586	GRIP
27	C35587	SCREW - HEX. HD. 5/16"-18 X 5/8"
28	C35588	SUPPORT - LOWER
29	C35589	TANK - WEIGHT
30	C35590	BRACKET - WEIGHT
31	C35591	PLUG - WEIGHT TANK
32	C34858	NUT - FLANGE 5/16"-18
33	C34802	SCREW - HEX. HD. 5/16"-18 X 1"

GRASS BAGGER MODEL BG39

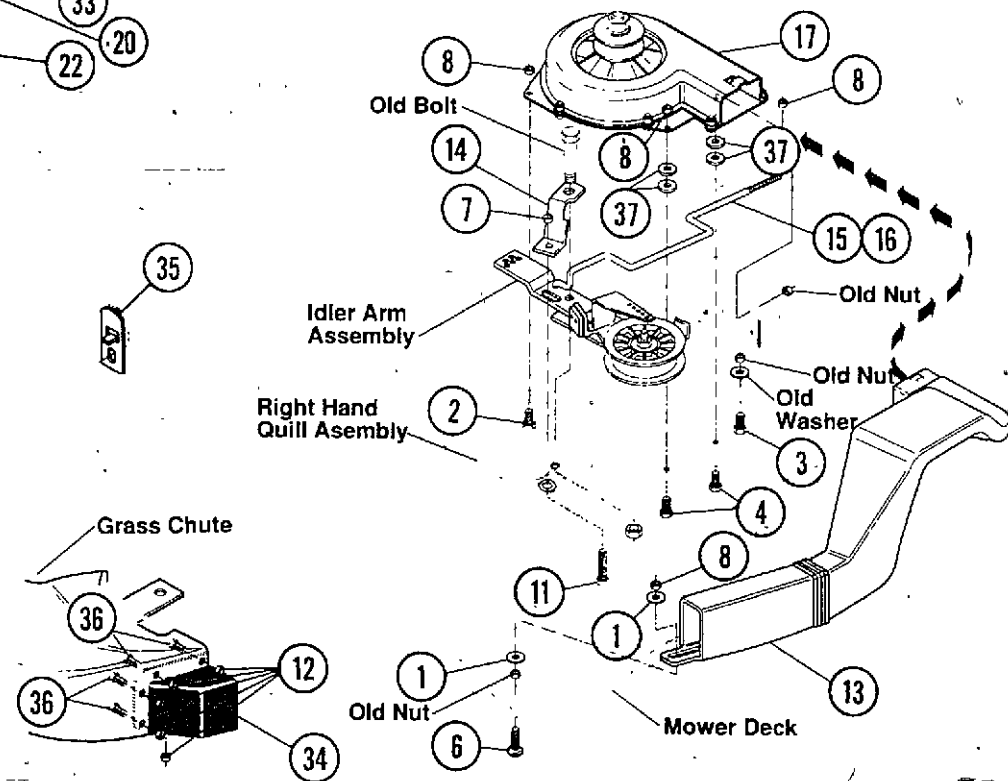
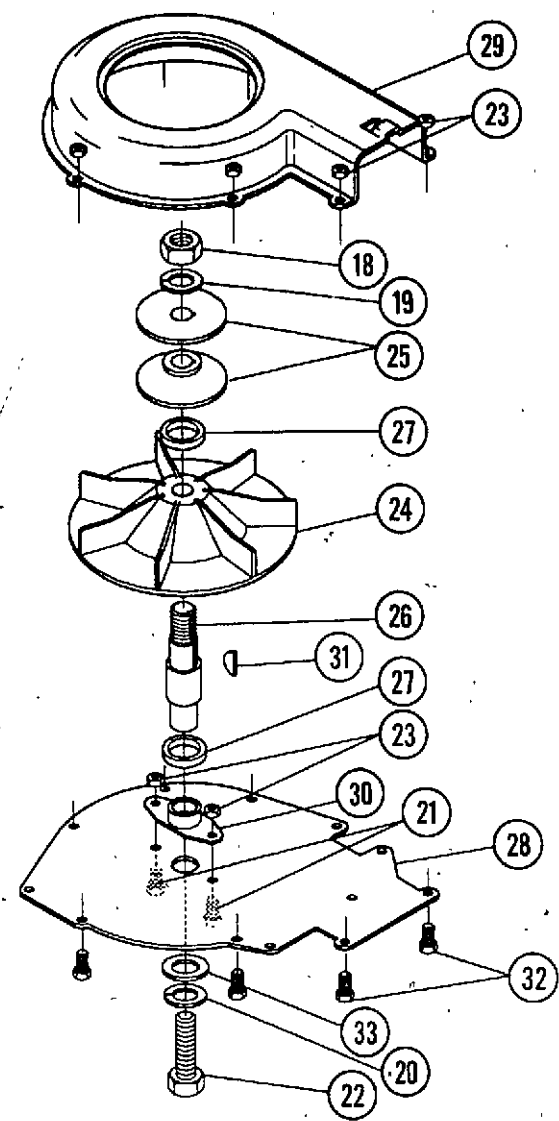


KEY	PART NO.	DESCRIPTION
1	C35569	SCREW - FL. HD., NO. 10-24 X 5/8"
2	C35575	LATCH - BAGGER
3	C35295	SCREW - HEX. HD. 5/16"-18 X 5/8"
4	C35570	COVER
5	C35626	BRACKET - SUPPORT MOUNT, L.H.
6	C34806	NUT - LOCK 1/4"-20
7	C35571	SCREW - RD. HD. 1/4"-20 X 5/8"
8	C35024	NUT - KEPS 1/4"-20
9	C35627	HINGE - COVER
10	C35573	STRAP - RETAINING
11	C35628	SUPPORT ASSEMBLY
12	C34798	NUT - LOCK 5/16"-18
13	C35629	BRACKET - SUPPORT MOUNT R.H.
14	C35290	NUT - KEPS, NO. 10-24
15	C34806	WASHER - FLAT 13/64"
16	C35577	SCREEN
17	C35578	WASHER - FLAT 9/32"
18	C35579	GROMMET - RUBBER
19	C35630	TUBE ASSEMBLY - UPPER
20	C35581	BAG
21	C35582	WASHER - FLAT 5/16"
22	C35132	SCREW - HEX. HD. 1/4"-20 X 3/4"
23	C35583	CHUTE - TRANSITION
24	C34848	SCREW - TAPPING 5/16"-18 X 1/2"
25	C35584	LEVER - LATCH
26	C35613	DECAL - TRANSITION CHUTE
27	C35586	TAB
28	C35124	SCREW - HEX. HD. 5/16"-18 X 1"
29	C34879	WASHER - FLAT 11/32"
30	C35072	NUT - FLANGE LOCK 5/16"-18

GRASS BAGGER MODEL BG43



KEY	PART NO.	DESCRIPTION
1	C35593	LID - GRASS CATCHER
2	C35594	ROD - PIVOT
3	C35595	PIN - COTTER .062" DIA. X 3/4"
4	C35112	WASHER - FLAT 9/32"
5	C35596	BAFFLE - GRASS CATCHER
6	C35571	SCREW - 1/4" X 5/8"
7	C35597	COVER - GRASS CATCHER
8	C34808	SCREW - TAPPING 1/4"-20 X 3/4"
9	C35598	SUPPORT - GRASS CATCHER
10	C35599	PIN - CLEVIS 1-3/4"
11	C34822	PIN - COTTER .091" DIA. X 1-5/8"
12	C35600	ROD - SUPPORT
13	C35601	BRACKET ASSEMBLY - R.H.
14	C35602	BRACKET ASSEMBLY - L.H.
15	C35603	STRAP - HOLD DOWN
16	C34806	NUT - LOCK 1/4"-20
17	C35604	SCREW - TAPPING 1/4"-20 X 1-1/2"
18	C35605	SPACER
19	C35606	SCREEN
20	C35607	BAG - GRASS CATCHER
21	C35609	CHUTE - LOWER
24	C34798	NUT - LOCK 5/16"-18
25	C35611	DECAL - FULL INDICATOR
26	C35612	CHUTE - UPPER
27	C35613	DECAL - DANGER
28	C35614	SCREW - HEX. HD. 1/4"-20 X 3/4"
29	C35615	LATCH - LEVER
30	C35586	TAB - PLASTIC
31	C35616	SCREW - HEX. HD. 1/4"-20 X 1"
32	C35617	STRAP - RUBBER
33	C35618	SPACER
34	C35619	BOLT - EYE 5/16"-18 X 2"
35	C34833	NUT - KEPS 5/16"-18
36	C34802	SCREW - HEX. HD. 5/16"-18 X 1"
37	C34876	WASHER - FLAT 11/32"
38	C35584	LEVER ASSEMBLY
39	C35024	NUT - KEPS 1/4"-20
40	C35620	NUT - PUSH
41	C35621	BRACKET - MOUNTING, L.H.
42	C35622	BRACKET - MOUNTING, R.H. (HYDRO UNIT ONLY)
43	C35623	SCREW - 5/16"-18 X 1"
44	C35624	PLATE - BAGGER BRACKET
45	C35625	WASHER - FLAT 11/32" (HYDRO UNIT ONLY)



AIR-ASSIST BLOWER

REF NO	PAGE NO	DESCRIPTION	QTY
1	C34876	WASHER - .344" X .69" X .065"	2
2	C34805	SCREW - 1/4"-20 X 1/2"	1
3	C35004	SCREW - 5/16"-18 X 1/2"	1
4	C35770	SCREW - 1/4"-20 X .80"	2
5	C35771	SCREW - 1/4"-20 X 1.25"	1
6	C35774	BOLT - 5/16"-18 X 1" CARRIAGE	1
7	C34798	NUT - 5/16"-18	1
8	C34806	NUT - 1/4"-20	3
9	C35772	SCREW - 1/4"-20 X 1.63"	2
10	C35006	SCREW - 5/16"-18 X .75"	3
11	C35307	SCREW - 5/16"-18 X 1.38"	1
12	C35776	NUT - NO.10-32	5
13	C35765	DUCT - AIR	1
14	C35449	BRACKET - SUPPORT	1
15	C35768	ROD - BRAKE RELEASE (USE WITH 45" DECK)	1
16	C35796	ROD - BRAKE RELEASE (USE WITH 39" DECK)	1
17	C35776	BLOWER ASSEMBLY	1
18	C35751	NUT	1
19	C35752	WASHER	1
20	C35054	WASHER	1
21	C35759	SCREW	2
22	C35763	SCREW	1
23	C35749	NUT	7
24	C35755	IMPELLOR	1
25	C35753	PULLEY - DRIVE	1
26	C35756	SHAFT - BLOWER	1
27	C35754	SPACER	2
28	C35760	PLATE - BOTTON	1
29	C35750	HOUSING - BLOWER	1
30	C35758	BEARING - SHAFT	1
31	C35757	KEY - WOODRUFF	1
32	C35761	SCREW	7
33	C35762	WASHER	1
34	C35764	INLET - AIR	1
35	C35767	STOP - LIFT	1
36	C35775	SCREW - NO.10-32 X .5"	5
37	C35773	SPACER - SLEEVE .25" X .47" X .20"	14

NUMERICAL INDEX

PART NO.	PAGE NO.	REF. NO.	PART NO.	PAGE NO.	REF. NO.	PART NO.	PAGE NO.	REF. NO.
C34798	5	9	C35584	9	38	C35773	11	37
C34798	7	12	C35586	5	26	C35774	11	6
C34798	9	24	C35586	7	27	C35775	11	36
C34798	11	7	C35586	9	30	C35776	11	12
C34802	5	33	C35587	5	27	C35776	11	17
C34802	9	36	C35588	5	28	C35796	11	16
C34805	11	2	C35589	5	29			
C34806	5	3	C35590	5	30			
C34806	7	6	C35591	5	31			
C34806	7	15	C35593	9	1			
C34806	9	16	C35594	9	2			
C34806	11	8	C35595	9	3			
C34808	9	8	C35596	9	5			
C34822	9	11	C35597	9	7			
C34833	9	35	C35598	9	9			
C34848	5	23	C35599	9	10			
C34848	7	24	C35600	9	12			
C34858	5	32	C35601	9	13			
C34876	5	10	C35602	9	14			
C34876	9	37	C35603	9	15			
C34876	11	1	C35604	9	17			
C34879	7	29	C35605	9	18			
C35004	5	12	C35606	9	19			
C35004	11	3	C35607	9	20			
C35006	11	10	C35609	9	21			
C35024	5	5	C35611	9	25			
C35024	7	8	C35612	9	26			
C35024	9	39	C35613	7	26			
C35054	11	20	C35613	9	27			
C35072	7	30	C35614	9	28			
C35112	9	4	C35615	9	29			
C35124	7	28	C35616	9	31			
C35132	5	21	C35617	9	32			
C35132	7	22	C35618	9	33			
C35290	5	13	C35619	9	34			
C35290	7	14	C35620	9	40			
C35295	7	3	C35621	9	41			
C35307	11	11	C35622	9	42			
C35449	11	14	C35623	9	43			
C35569	5	1	C35624	9	44			
C35569	7	1	C35625	9	45			
C35570	5	2	C35626	7	5			
C35570	7	4	C35627	7	9			
C35571	5	4	C35628	7	11			
C35571	7	7	C35629	7	13			
C35571	9	6	C35630	7	19			
C35572	5	6	C35749	11	23			
C35573	5	7	C35750	11	29			
C35573	7	10	C35751	11	18			
C35574	5	8	C35752	11	19			
C35575	5	11	C35753	11	25			
C35575	7	2	C35754	11	27			
C35576	5	14	C35755	11	24			
C35577	5	15	C35756	11	26			
C35577	7	16	C35757	11	31			
C35578	5	16	C35758	11	30			
C35578	7	17	C35759	11	21			
C35579	5	17	C35760	11	28			
C35579	7	18	C35761	11	32			
C35580	5	18	C35762	11	33			
C35581	5	19	C35763	11	22			
C35581	7	20	C35764	11	34			
C35582	5	20	C35765	11	13			
C35582	7	21	C35767	11	35			
C35583	5	22	C35768	11	15			
C35583	7	23	C35770	11	4			
C35584	5	24	C35771	11	5			
C35584	7	25	C35772	11	9			

INGERSOLL

Ingersoll Equipment Co., Inc.