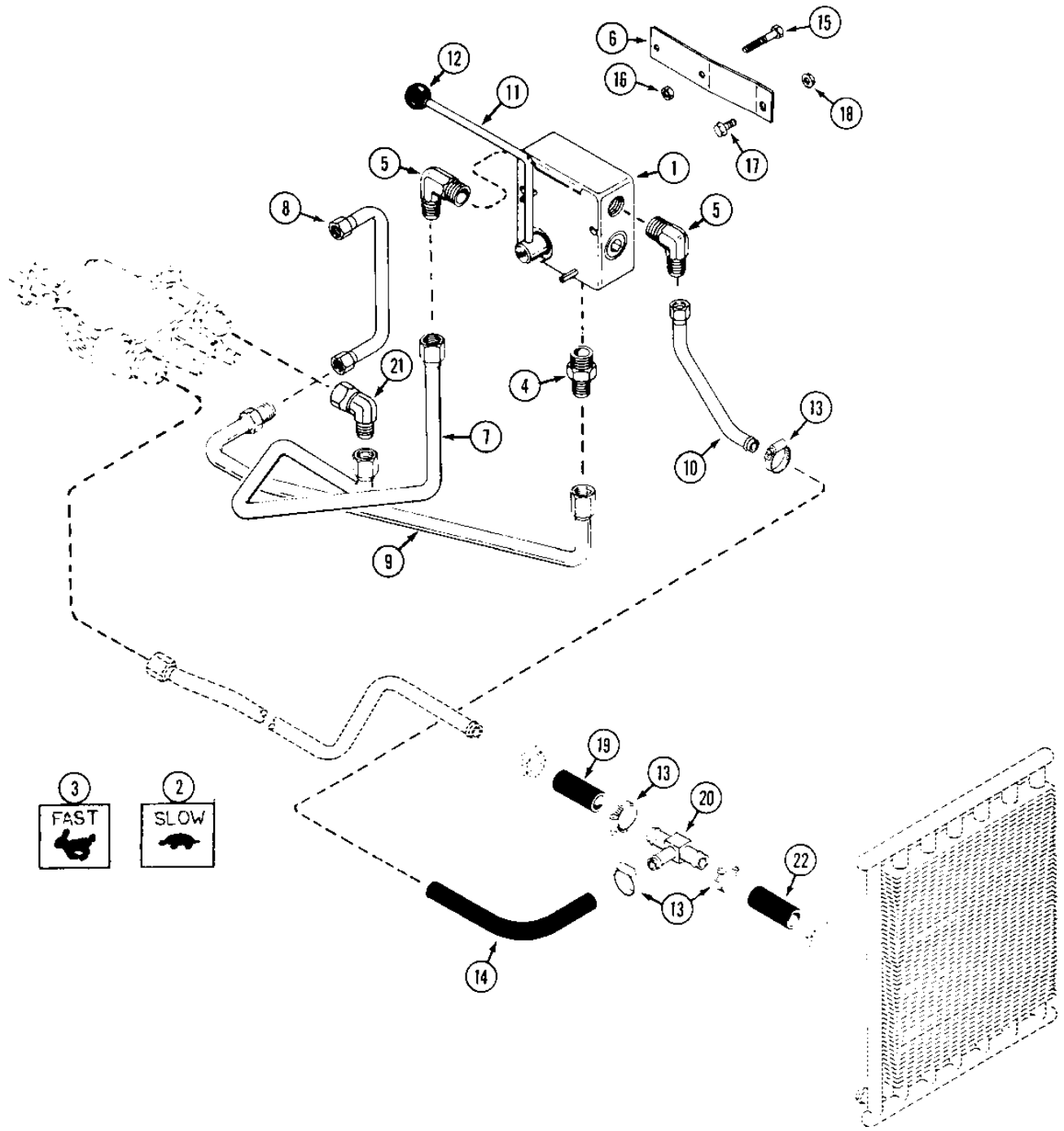


HFC34C FLOW CONTROL

3100 AND 4100 Series Tractors (Including Diesel)



INDEX

HFC34C FLOW CONTROL
 3100 AND 4100 Series Tractors (Including Diesel)

REF.	PART NO.	DESCRIPTION	REQ'D
1	C23618	VALVE - flow control	1
2	C33219	DECAL - "slow"	1
3	C33220	DECAL - "fast"	1
4	218-445	FITTING - 5/8" tube x 7/8" - 14 straight.....	1
5	218-485	FITTING - 90° 5/8" tube x 7/8" - 14 straight	2
6	C44311	BRACKET - mounting	1
7	C42483	TUBE - flow valve to travel valve	1
8	C42484	TUBE - flow valve to PTO valve (3118D).....	1
8	C42485	TUBE - flow valve to PTO valve (4118D).....	1
9	C42531	TUBE - flow valve to PTO valve.....	1
10	C42486	TUBE - bypass to return.....	1
11	C36848	LEVER - control	1
12	C28251	KNOB	1
13	214-254	CLAMP - hose 5/8" to 1-1/4"	UAR
14	C44313	HOSE - return 5/8" ID x 28".....	1
15	113-1 5	BOLT - 1/4" - 20 x 2-1/4"	1
15	113-12	BOLT - 1/4" - 20 x 2-1/2"	1
16	131-1180	NUT - lock 1/4" -20.....	2
17	121-21	BOLT - 1/4" - 20 x 1/2"	1
18	131-934	NUT - 1/4" - 20 flange lock	1
19	C14245	HOSE - return	1
20	C44314	TEE - return.....	1
21	218-5232	FITTING - 90° swivel 5/8" tube.....	1
22	C43344	HOSE - return (can be cut to length from original tractor hose) . . .	1
	218-5229	FITTING - 90° swivel 5/16" tube (not shown) install to tee in travel valve when 3 point hitch is installed	2