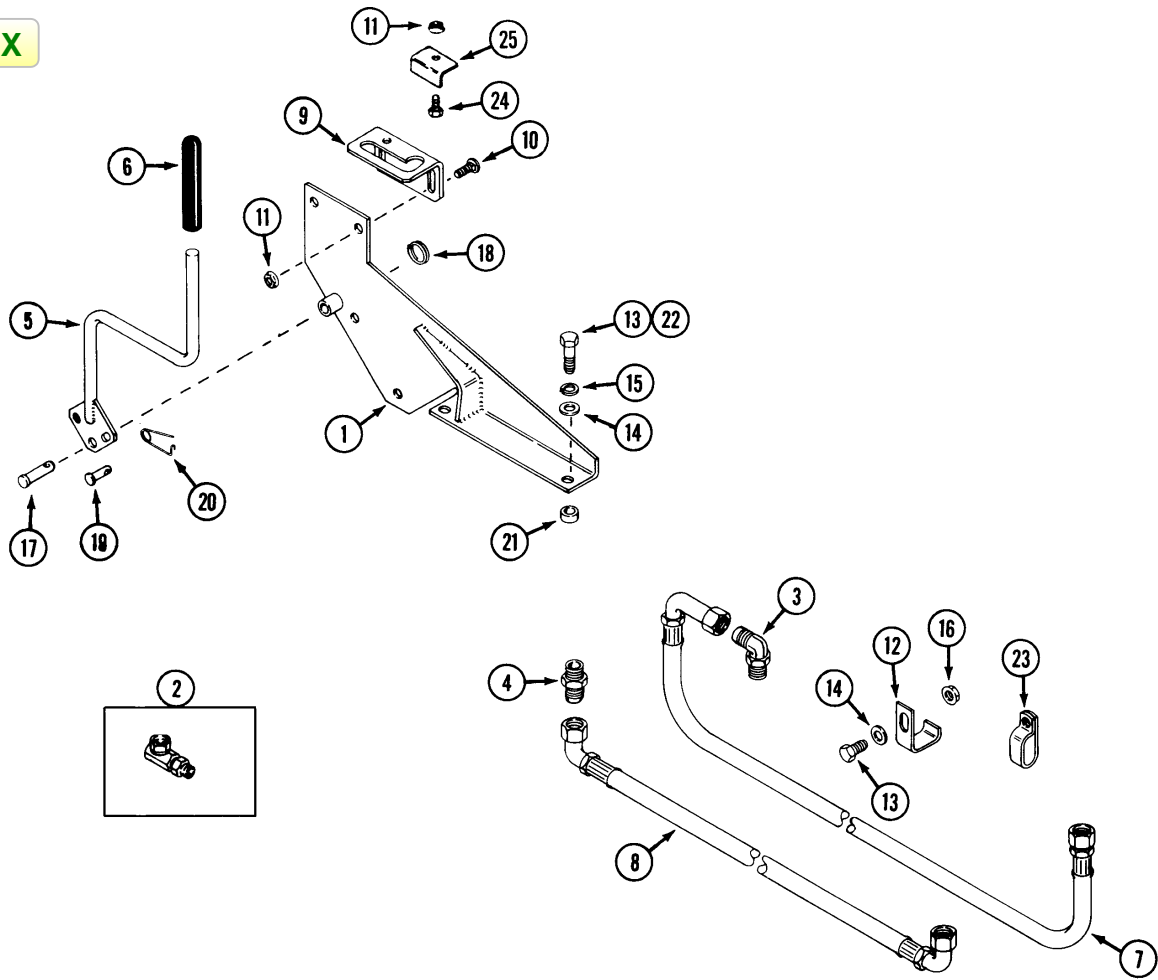
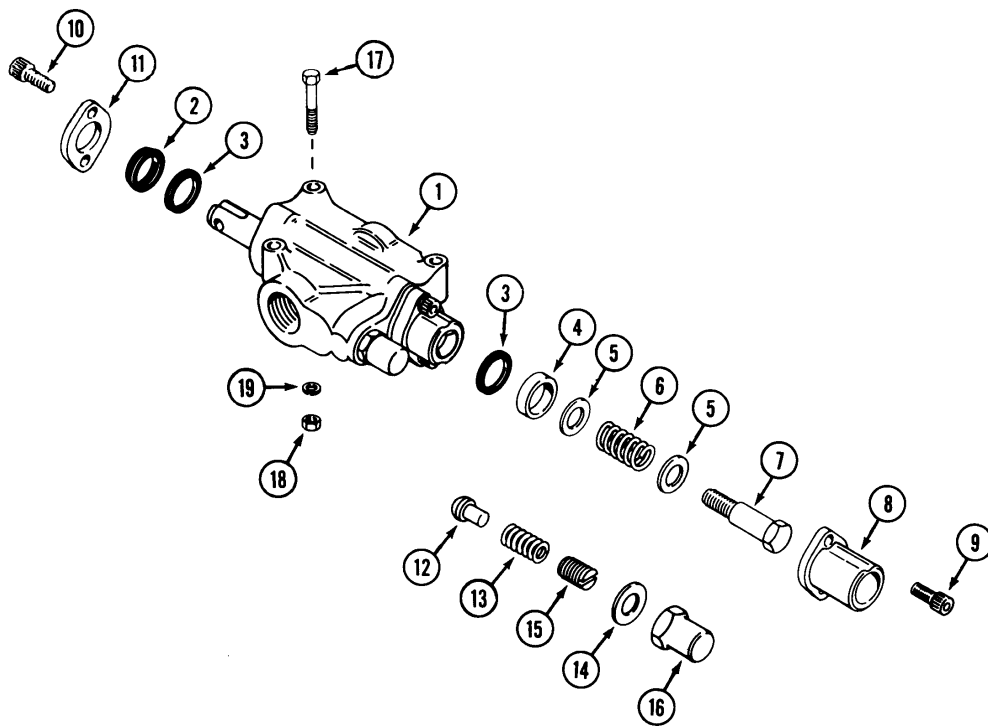


INDEX



INDEX



**INDEX****HP30 (3010, 3012, 3014), HP40 (4014), HYDRAULIC PTO  
PTO HOSES AND MOUNTING BRACKET**

REF.	PART NO.	DESCRIPTION	REQ'D
1	C32200	BRACKET - valve mounting.....	1
2	218-5201	FITTING – work port, 90° elbow 7/8" - 14 x 1/2" NPSM swivel.....	2
3	218-5107	FITTING - inlet port, 7/8" - 14 x 7/8" - 14 flare, 90° adjustable elbow .....	1
4	218-5062	FITTING - outlet port, 5/8" x 7/8" - 14 flare, straight .....	1
5	C32403	HANDLE - valve .....	1
6	C26020	GRIP - handle .....	1
7	C32207	HOSE - pumptoPTO65"(HP30).....	1
7	C32208	HOSE - pumptoPTO63"(HP40).....	1
8	C32209	HOSE - PTO to travel valve 32" (H P30) .....	1
8	C32210	HOSE - PTO to travel valve 34" (H P40) .....	1
9	C32211	BRACKET - handle guide .....	1
10	111-101	BOLT - 1/4" – 20 x 5/8" carriage .....	2
11	131-934	NUT - 1/4" - 20 flange lock.....	3
12	C32332	CLAMP - tube (H P30) .....	1
13	113-103	BOLT - 5/16" – 18 x 1" .....	3
14	195-521	WASHER - 5/16" .....	3
15	192-20	LOCKWASHER - 5/16" .....	2
16	131-911	NUT - 5/16" - 18 flangelock .....	1
17	C32214	PIN - clevis3/8" x 1-1/2".....	1
18	C28105	RING - retaining .....	1
19	C28964	PIN – clevis 3/16" x 1" .....	1
20	C10883	PIN - safety .....	1
21	C29106	SPACER - 3/8" I.D. x 5/8" O.D. x 5/8" long (HP30) .....	2
22	113-122	BOLT - 5/16" – 18 x 1-1/2" (HP30).....	2
23	C32213	CLAMP – tube (HP40).....	1
	C22947	TIE - nylon.....	1
24	113-3	BOLT - 1/4" - 20 x 3/4 .....	1
25	C32327	BRACKET - handle stop .....	1

**INDEX****VALVE**

REF.	PART NO.	DESCRIPTION	REQ'D
1	C30046	VALVE - hydraulic .....	1
2	C26706	WIPER - spool.....	1
3	C26707	RING - quad.....	2
4	C26722	SPACER - end cap .....	1
5	195-526	WASHER .....	2
6	C26724	SPRING - centering .....	1
7	C26725	BOLT - shoulder.....	1
8	C26726	BONNET - end cap .....	1
9	165-143	SCREW - 1/4" – 20 x 3/4" socket head.....	2
10	165-143	SCREW - 1/4" – 20 x 3/4" socket head.....	2
11	C26727	RETAINER - seal .....	1
12	C26708	POPPET - relief.....	1
13	C26709	SPRING - relief .....	1
14	C26710	WASHER - aluminum, seal.....	1
15	C26711	SCREW - adjustment, relief .....	1
16	C26712	NUT - cap, relief .....	1
17	113-5	BOLT - 1/4"x1-1/2" .....	3
18	129-101	NUT - 1/4".....	3
19	192-19	LOCKWASHER - 1/4" .....	3