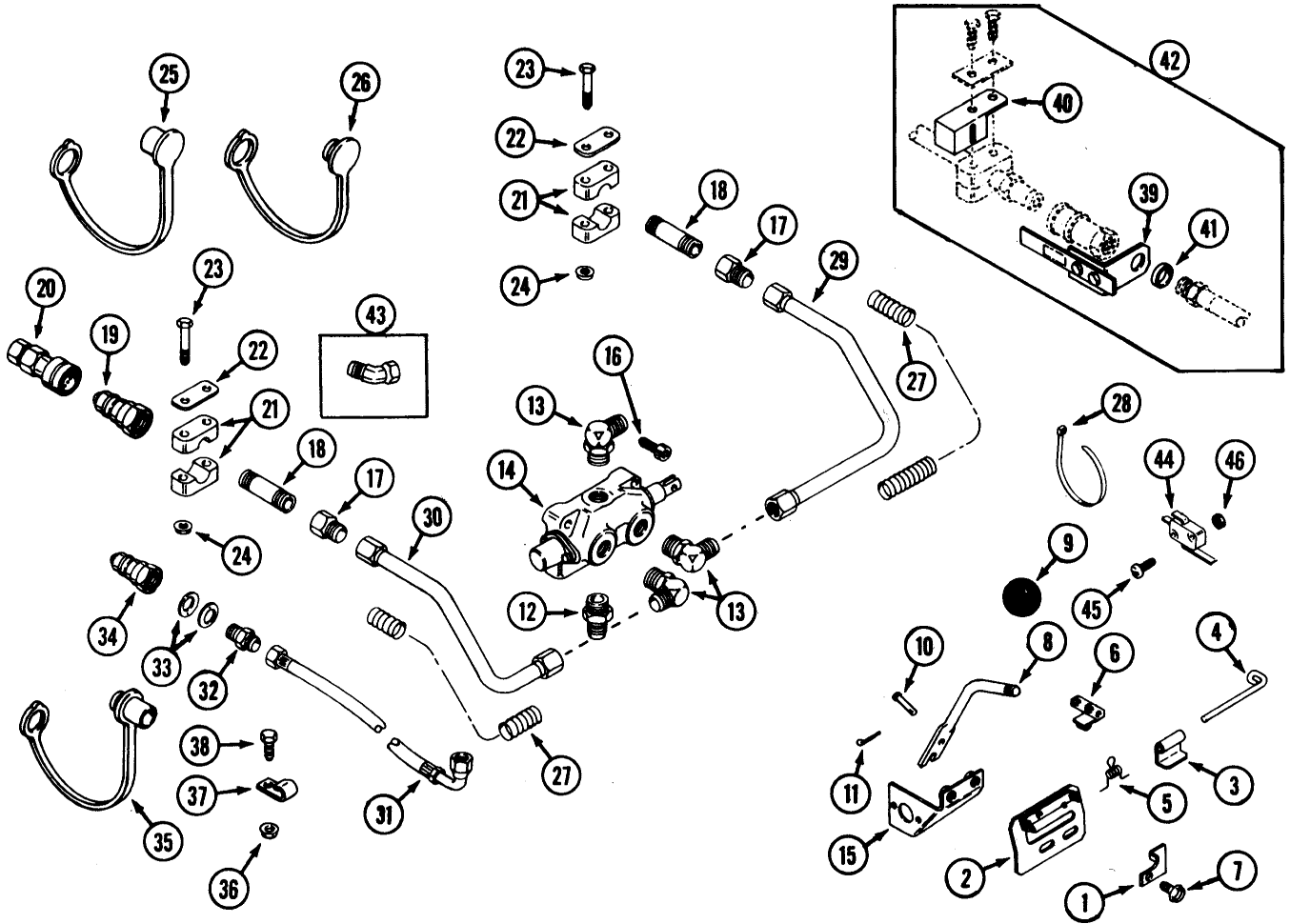


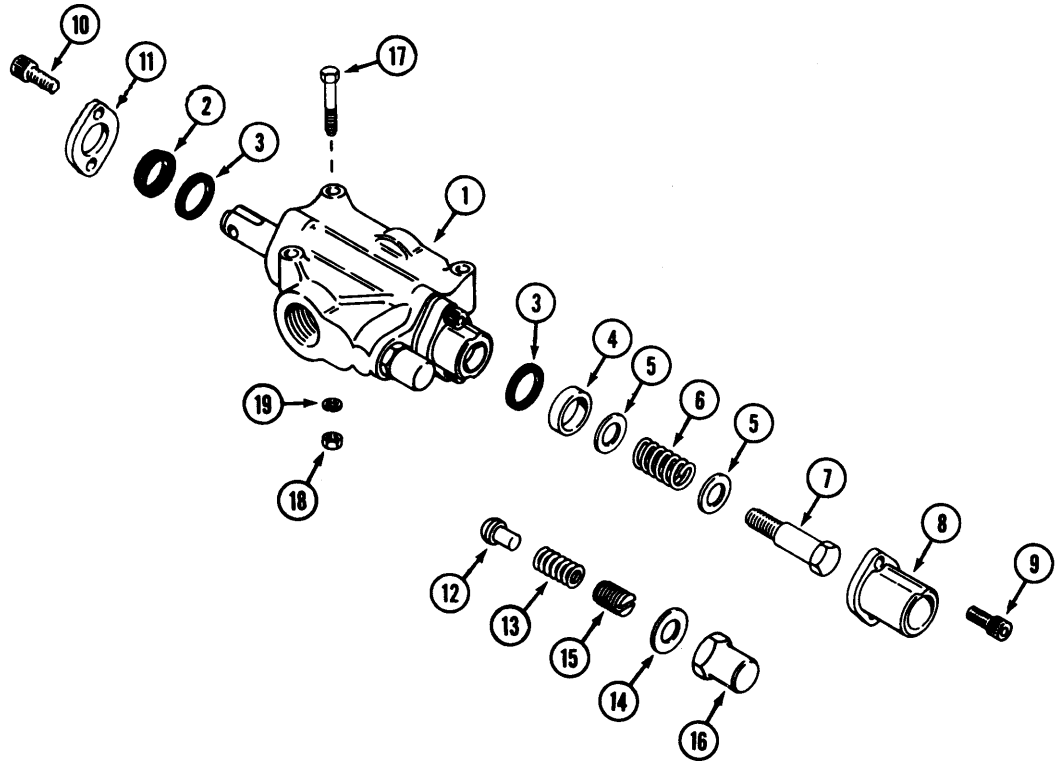
# HP34 HYDRAULIC PTO KIT



**HP34 HYDRAULIC PTO**  
 (for 3018PS PIN 14181900 and after)  
 (for 4020PS PIN 14184000 and after)

REF.	PART NO.	DESCRIPTION	REQ'D
1	C42198	LATCH - reverse lockout.....	1
2	C42078	GATE - shift.....	1
3	C42081	STOP - lever .....	2
4	C42082	PIN - hinge .....	1
5	C42083	SPRING - torsion .....	1
6	C37400	ACTUATOR - switch .....	1
7	C29691	SCREW - 5/16" - 18 x 1" .....	2
8	C44936	LEVER - PTO.....	1
9	C10487	KNOB .....	1
10	C28964	PIN - clevis 3/16" x 1".....	2
11	132-329	PIN - cotter 1/16" x 3/4".....	2
12	218-5062	FITTING - 7/8".....	1
13	218-5107	FITTING - 90° 7/8".....	3
14	C30046	VALVE - PTO ( <a href="#">repairs page</a> ) .....	1
15	C37401	BRACKET - actuating .....	1
16	61-420	SCREW - 1/4" - 20 x 1-1/4" socket head .....	2
17	218-465	FITTING - 1/2" x 7/8" - 14 .....	2
18	C37142	NIPPLE - pipe .....	2
19	C37187	COUPLING - quick, male 7/8".....	2
20	C37188	COUPLING - quick, female 7/8".....	1
21	C37144	CLAMP.....	4
22	C37145	COVER - clamp .....	6
23	113-15	BOLT - 1/4" - 20 x 2-1/4".....	4
24	131-934	NUT - 1/4" - 20 flange lock.....	4
25	C40641	CAP - dust.....	1
26	C40642	PLUG - dust .....	1
27	C37454	CONDUIT - corrugated (cut to length) .....	2
28	C22947	TIE - nylon.....	4
29	C37233	TUBE - L.H.....	1
30	C37234	TUBE - R.H.....	1
31	C44939	HOSE - hydraulic 44".....	1
32	218-443	FITTING - 3/8" x 1/4".....	1
33	C37249	WASHER - spring .....	2
34	C41043	COUPLING - quick, male 9/16".....	1
35	C33404	CAP - dust.....	1
36	131-934	NUT - 1/4" - 20 flange lock.....	1
37	C32455	CLIP - "J".....	1
38	187-1036	SCREW - 1/4" - 20 x 1/2" self-tap .....	1
39	C37439	KEY - coupling switch .....	1
	C37440	DECAL.....	1
	113-1	BOLT - 1/4" - 20.....	2
	195-518	WASHER - 1/4".....	2
40	C37437	BRACKET - switch mounting.....	1
41	C37459	CUSHION - key.....	1
42	C42048	KIT - coupler switch (optional) .....	1
43	217-1086	FITTING - 45° (3018PS) .....	2
44	C37399	SWITCH - interlock .....	2
45	C33696	SCREW - #4 - 40 x 1-1/8".....	2
46	C33697	NUT - #4 - 40 .....	2
	C37435	HARNESS - wire, PTO switches.....	1
	C37275	DECAL - "ON-OFF".....	1

**INDEX**



**PTO VALVE**

**INDEX**

1	C30046	VALVE - hydraulic .....	1
2	C26706	WIPER - spool .....	1
3	C26707	RING - quad .....	2
4	C26722	SPACER - end cap .....	1
5	195-526	WASHER .....	2
6	C26724	SPRING - centering .....	1
7	C26725	BOLT - shoulder .....	1
8	C26726	BONNET - end cap .....	1
9	165-143	SCREW - 1/4" - 20 x 3/4" socket head .....	2
10	165-142	SCREW - 1/4" - 20 x 5/8" socket head .....	2
11	C26727	RETAINER - seal .....	1
12	C26708	POPPET - relief .....	1
13	C26709	SPRING - relief .....	1
14	C26710	WASHER - aluminum, seal .....	1
15	C26711	SCREW - adjustment, relief .....	1
16	C26712	NUT - cap, relief .....	1
17	113-5	BOLT - 1/4" x 1-1/2" .....	3
18	129-101	NUT - 1/4" .....	3
19	192-19	LOCKWASHER - 1/4" .....	3