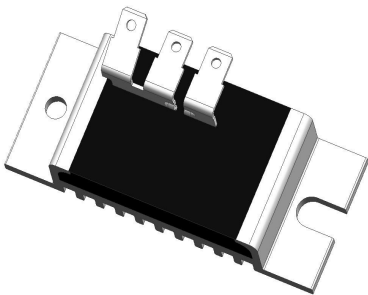
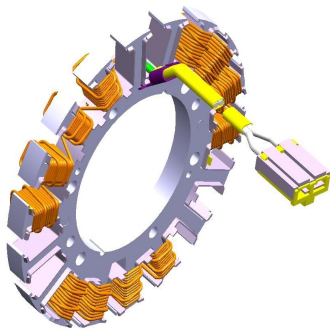


Single-Phase, Half-Wave Voltage Regulator

For Gasoline Engines w/12V Battery, Negative-Ground Charging Systems (Lawn & Garden, Generator Sets, Industrial Applications)



Regulator



Stator

Features:

Rated Output Voltage: 14.2 V
Rated Output Current: 13/15/20 A
Engine Speed Range: Idle to 5500 RPM

Low Cost
Rugged Extruded Aluminum Mounting Shell
Epoxy-Encapsulated Circuitry

Used with 6-Magnet Flywheels
Reverse Current Protection
Reverse Battery Polarity Protection
Open- and Short-Circuit Protection
Low Leakage Current

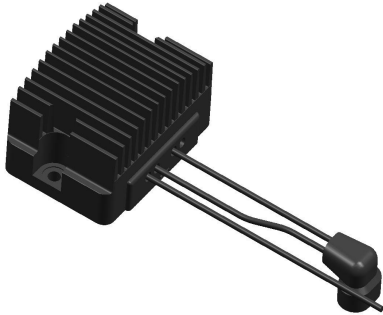
Temperature Rating: -20°C to +100°C
Cooling: Ambient Air Flow
Uses Industry-Standard Connector Terminals
Dimensions (in.): 3.20 L x 1.28 W x 1.10 H

Options:

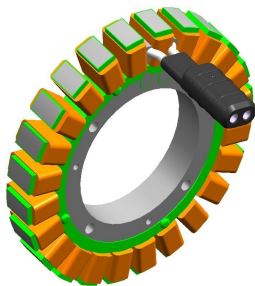
Indicator Lamp Output for Charging System
Status (Open/Short Circuit and Low Voltage
Indication – Less than 11.5 V or 12.3V)
Additional Circuit Protection Features Available
Custom Connectors and Mountings Available
Die-Cast Housings Available

Single-Phase, Full-Wave Voltage Regulator/Charging System

For Single/Multiple-Cylinder Gasoline Engines w/12V Battery, Negative-Ground Charging Systems (Motorcycle, ATV)



Regulator



Stator



Rotor

Features:

Rated Output Voltage: 14.25 V
Rated Output Current: 35 A
Engine Speed Range: 125 to 6000 RPM

Low Cost
Rugged Extruded Aluminum Mounting Shell
Epoxy-Encapsulated Circuitry

Uses 24-Pole Rotor and Stator Combination
Reverse Current Protection
Reverse Battery Polarity Protection
Open- and Short-Circuit Protection
Low Leakage Current

Temperature Rating: -20°C to +85°C
Cooling: Ambient Air Flow
Uses Industry-Standard Connector Terminals
Dimensions (in.): 3.20 L x 1.80 W x 1.10 H

Options:

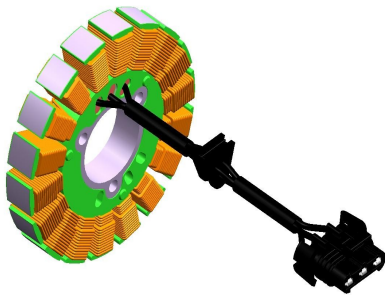
Aluminum Housing Finishes:
Black, Chrome, Nickel, Clear
Die-Cast Housings Available
Additional Circuit Protection Features Available
Custom Connectors and Mountings Available

3-Phase, Full-Wave Voltage Regulator/Charging Systems

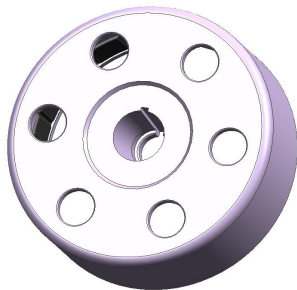
For Single/Multiple-Cylinder Gasoline Engines w/12V Battery, Negative-Ground Charging Systems (Motorcycle, ATV)



Regulator



Stator



Rotor

Features:

Rated Output Voltage: 14.5 V
Rated Output Current: 38/50/65 A
Engine Speed Range: 125 to 6000 RPM

Low Cost
Rugged Extruded Aluminum Mounting Shell
Anodized Housing Finish
Epoxy-Encapsulated Circuitry

Uses 18-Pole Stator & 20/24-Pole Rotor Combination
Reverse Current Protection
Reverse Battery Polarity Protection
Open- and Short-Circuit Protection
Over-Temperature Shutdown
Transient-Voltage Suppression
Low Quiescent Current

Temperature Rating: -20°C to +85°C
Cooling: Ambient Air Flow
Uses Industry-Standard Connector Terminals
Dimensions (in.): 4.41 L x 3.17 W x 1.80 H

Options:

Aluminum Housing Finishes: Black, Clear
Die-Cast Housings Available
Additional Circuit Protection Features Available
Custom Connectors and Mountings Available